

JCCDC

JEFFERSON COUNTY CHILD DEVELOPMENT COUNCIL, INC.



A
N N U
A L



A
L

2018-19

R
E
P
O
R
T



TABLE

OF

CONTENTS

3....From the Executive Director

4....Mission and Vision

5....Programs

6....Our Families and Children

7....Health and Nutrition

**8....Diversity and Disability
Services**

9....JCCDC Financial Statements

10...Thank You to Our Partners



FROM THE EXECUTIVE DIRECTOR

This has been a successful and adventurous year for Jefferson County Child Development Council Head Start/Early Head Start Programs!

With our continuous improvement standards for this year, we continue to accomplish our goals of making a difference in the lives of families and children within the community of Jefferson County.

Through the ongoing efforts of our Executive and Leadership Teams, our dedicated staff, instrumental Policy Council, and community members, we are making great strides in bringing the Head Start/Early Head Start models to life in which every child, regardless of circumstances, has the ability to reach their full potential.

With collaboration and stellar leadership, our program continuously provides families and children access to high quality early educational programs and nutritionally balanced meals in their earliest and most vulnerable years. We make a positive difference in the lives of children by the dedicated work and educational experiences we provide on a daily basis.



Our Federally funded programs are the foundation that builds our children and prepares them for future success. As we all know, young children today are our future tomorrow. Investing in children is why we are committed to providing comprehensive services with excellence.

Jefferson County Child Development Council will continuously seek new funding opportunities as a platform to providing additional services for our Jefferson County community.

Please continue to follow us on our path to ensuring continued positive impacts in the lives of the children and families we serve.

Thank you.

A handwritten signature in black ink, appearing to read "E. [unclear]".



MISSION

The Jefferson County Child Development Council, Inc. (JCCDC) provides comprehensive opportunities for children and families to grow intellectually, physically, socially, and emotionally, and promotes self-sufficiency, self-esteem, and self-confidence in a nurturing environment that is responsive to the individual needs of each child and each family.



VISION

By the year 2020, the JCCDC Head Start/Early Head Start Program will be recognized as a model Family Child Care Head Start program which prepares low-income children and families for leadership in an increasingly diverse and complex world.

Within the framework of this vision, JCCDC will:

- Provide quality child care, educational opportunities, and nutrition while improving the health/general welfare of enrolled children and their families
- Work together with families and community partners to provide support services and enhance opportunities and resources for all children in low-income families within Jefferson County.
- Involve parents in the educational process and in public policy decisions affecting their children and families
- Provide opportunities for and encourage the professional development of staff hired from the communities we serve.

GOALS

LONG TERM GOALS: 2018-2023 (on going)

- Ensure HSPPS compliance in all content areas: Governance, Program Operations & Structure, Financial, Education, Parent, Family and Community Engagement (PFCE), and Health, Service to Children with Disabilities, Transitions, Services to Pregnant Women, Human Resources, Program Management, and Facilities.
- Serve children whose parents are employed in low-income jobs or enrolled in training/educational programs.
- Continue to provide full-day, full-week Head Start services to working families supporting the child's health and well-being.
- Utilize technology for growth and development
- Support the implementation of developmentally appropriate childcare and early learning activities aligned with reliable outcomes identified and evaluated through data collection
- Continue engagement in opportunities or support community engagement experience
- Support professional development of JCCDC staff in enhancing the knowledge and skills to perform tasks associated with the delivery of comprehensive services.

PROGRAMS

HEAD START FAMILY CHILD CARE PROGRAM

The JCCDC Head Start Family Child Care (HSFCC) Program was originally founded in 1984 to serve 100 children. As of the 2018-19 fiscal year, the program now serves 240 children. Full-day, full-year child care is provided near the residences of enrolled children in licensed family child care homes where no more than six (6) children are enrolled or licensed family group homes where 12 or fewer children are enrolled.

EARLY HEAD START FAMILY CHILD CARE PROGRAM

JCCDC became a grantee for the Early Head Start Family Child Care (EHSFCC) Program in 2010 to provide comprehensive child and family development services for low income pregnant women and families with infants and toddlers from birth to three years of age. The Early Head Start (EHS) Program serves 36 infants and toddlers and 6 pregnant women. JCCDC is the only Head Start grantee funded to serve Head Start eligible children and families solely in a full-day family child care setting.



CHILD NUTRITION PROGRAM

Since 1977, JCCDC has served as a sponsor for the Child Nutrition Program (CNP) under the United States Department of Agriculture (USDA) for licensed family child care homes. The Alabama Department of Education, Office of Child Nutrition contracts with JCCDC to provide this service in Jefferson, Shelby, Walker, St. Clair, and Blount counties. JCCDC contracts approximately 130 licensed family child care and group homes for CNP services. The goal of the Child Nutrition Program is to improve nutritional status and diets of young children.

OUR FAMILIES AND CHILDREN

ENROLLMENT DURING THE YEAR

HEAD START	
Age 2	32
Age 3	149
Age 4	141
Age 5	1
TOTAL	323

EARLY HEAD START	
Under 1	17
Age 1	22
Age 2	25
TOTAL	64



Individuals that volunteered their time in our Head Start programs **263**

Volunteers that were Head Start parents **250**

FUNDED ENROLLMENT

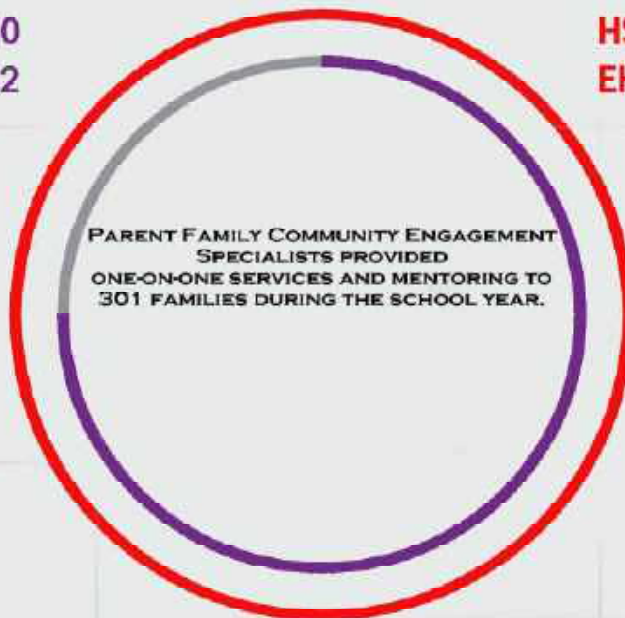
HS - 240

EHS - 42

CUMULATIVE ENROLLMENT

HS - 323

EHS - 64



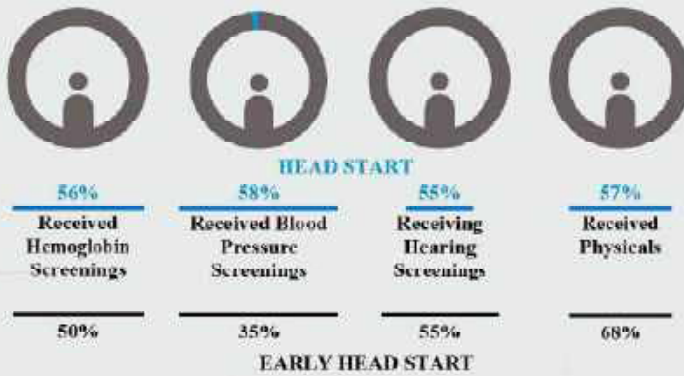
HEALTH AND

NUTRITION

JCCDC strives for all children to receive health screenings. We assist families with follow-up care where needed.



OF THE STUDENTS ENROLLED FOR THE 2018-19 SCHOOL YEAR...



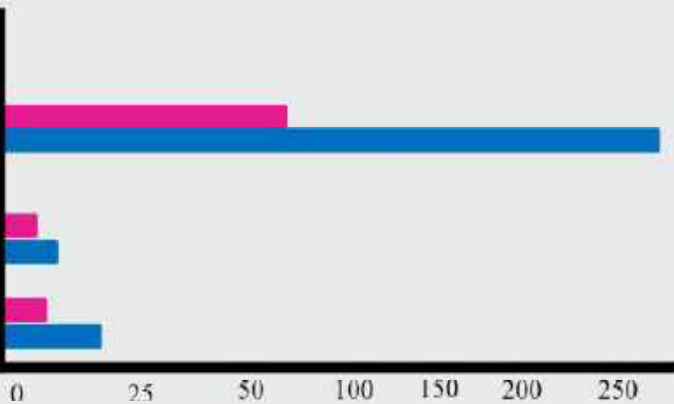
Children completed required screenings for development, sensory and behavioral concerns



Children with speech or language impairments

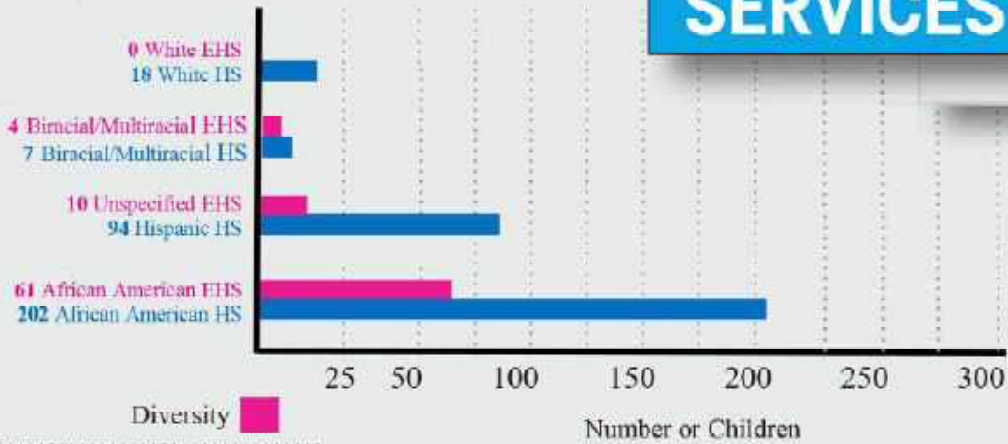


Children with IEP

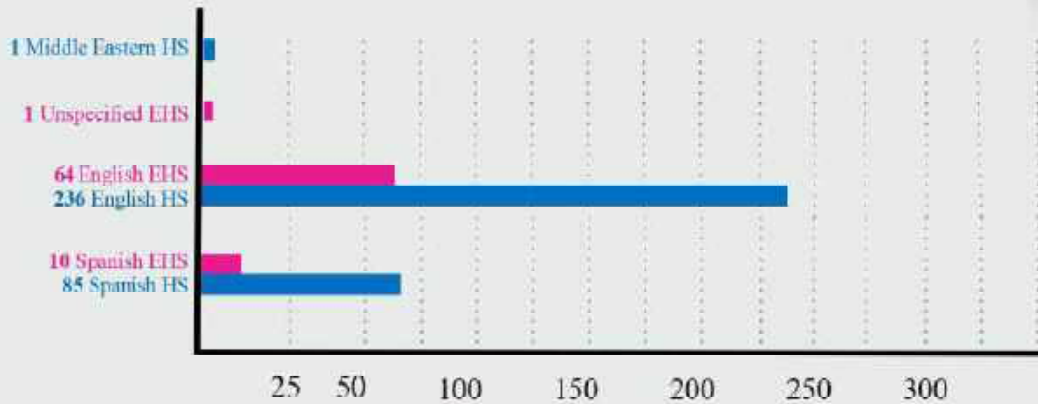


DIVERSITY AND DISABILITY

SERVICES



Languages Spoken



Number of Children

5 HS/3 EHS children raised by grandparents



5 HS/2 EHS family experiencing homelessness



1 HS/0 EHS child was in foster care



237
CHILDREN

raised in single
parent families

2018-19 REVENUES AND EXPENSES

	HEAD START EARLY HEAD START	NUTRITION	OTHER	TOTAL
REVENUES				
Federal Revenue	2,631,225			2,631,225
State of Alabama		980,328		980,328
Private Contributions			464	464
Non-Federal Share	657,796			657,796
TOTAL REVENUES	3,289,021	980,328	464	4,269,813

	HEAD START EARLY HEAD START	NUTRITION	OTHER	TOTAL
EXPENSES				
Personnel	407,837	68,003		475,840
Fringe Benefits	71,936	17,402		89,338
Travel	4,779			4,779
Equipment	168,212			168,212
Supplies	215,410	5,536		220,946
Contractual	1,359,815	831,631		2,191,446
Training Technical Assist ..	37,522			37,522
Other	365,672	54,300	565	420,537
Non-Federal Share	657,796			657,796
TOTAL EXPENSES	3,288,979	976,872	565	4,266,416

2019-20 HEAD START/ EARLY HEAD START BUDGET

Personnel	664,678
Fringe Benefits	141,591
Travel	10,000
Equipment	33,790
Supplies	100,186
Contractual	1,419,500
Training Technical Assist	37,522
Other	269,824
Non-Federal Share	669,273
TOTAL EXPENSES	3,346,364



THANK YOU!

**JCCDC WOULD LIKE TO THANK ALL OF
OUR WONDERFUL DONORS, PARTNERS AND
VOLUNTEERS WHO CONTRIBUTED TO THE
PROGRAM OVER THE PAST YEAR.**

Birmingham City Schools
Jefferson County School System
Bessemer City Schools
Department of Human Resources
United Way
Good Samaritan Place
JCCEO
Christian Service Mission
Catholic Center of Concern
Greater Birmingham Ministry
Toys-4-Tots
Salvation Army
Sorrell Healthcare
UAB Dental School
Department of Public Health
Birmingham Association of Black Nurses
Children's Hospital
Alabama Child Care Partnership
First Baptist Church (Downtown Birmingham)

